



## DOGA 319H - DC WIPER MOTOR WITH FEEDBACK

Right angle worm gearbox, hall sensors, IP65 option

319.4846.20.00  
Worm gearmotor 12 V dc, 4 Nm, 100 rpm, 6 A, Hall sensors

- 12 - 24Vdc with positional feedback
- Up to 9Nm
- Up to 100rpm
- Compact low noise design
- High starting torque



### PRODUCT DESCRIPTION

The DOGA 319H series uses a brushed DC motor with worm gearbox and is developed to provide a compact, low noise and cost-effective solution to suit many industrial applications. Integrated with the motor are hall effect sensors offering up to 972ppr positional accuracy of the output shaft for feedback of speed, direction, and position of the rotor.

The standard hardened plastic worm wheel offers smooth, low noise operation and good performance, along with durability. IP40 is standard (IP65 option), with an EMC filter option.

VOLTAGE: 12 / 24Vdc supply - ideally suited to **battery powered** and **mobile applications**.

TORQUE: >9Nm nominal, >60Nm starting – a good choice for applications requiring very **high start-up power**.

SPEED: 30 - 230rpm options using a range of motor/gearbox combinations.

For modest quantities DOGA can offer **product customisation** to better suit the individual needs of the customer and application. Adaptations can include changes to the output shaft, supply voltage, gear wheel material, cabling/connectors, gear ratios and motor windings.

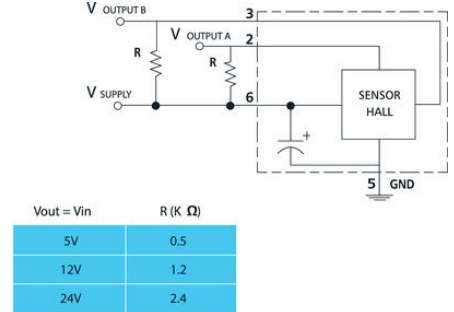
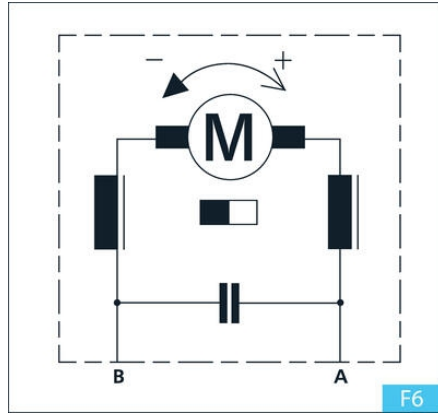
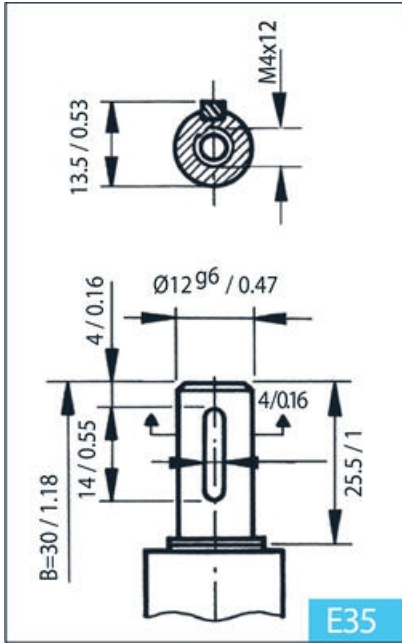
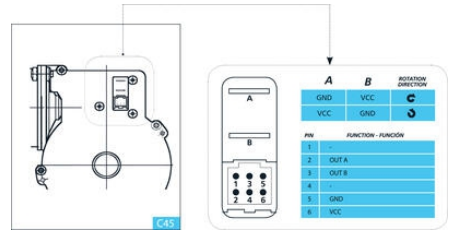
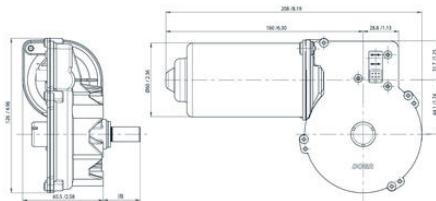
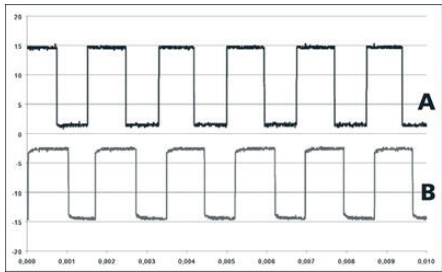
Typical applications include:

**Agriculture**  
**Building access**  
**Care aid**  
**Medical**  
**Office equipment**  
**Marine**  
**General industrial automation**

### TECHNICAL DATA

Current max	60 A
EMC filter	Yes
IP class	IP40





Vout = Vin	R (K Ω)
5V	0.5
12V	1.2
24V	2.4

